

# User Manual



## Contents

|                                   |    |
|-----------------------------------|----|
| Preface.....                      | 2  |
| Feature.....                      | 3  |
| Preparation.....                  | 4  |
| Operation                         |    |
| How to deal with the earhook..... | 5  |
| Assembling the HC-206.....        | 6  |
| Wearing your hearing aid.....     | 7  |
| Replacing the battery.....        | 8  |
| Volume control.....               | 9  |
| Memory switch.....                | 10 |
| Maintenance                       |    |
| Cleaning .....                    | 11 |
| Troubleshooting .....             | 12 |
| Appendix                          |    |
| Technical information.....        | 13 |
| FDA information.....              | 14 |

# Preface

Congratulations on becoming the new owner of our flagship hearing aid, the HC 206! We think you will find the perfect mix of price and quality.

Please take the time to carefully read through this manual so you can become knowledgeable in how to use the hearing aid as well as its various functions!

Welcome to the Advanced Affordable Hearing family!

## **Intended use**

Hearing aids help people with diminished hearing by amplifying the sounds around them and feeding it directly into the ear. The amplification helps to compensate for hearing loss allowing you to connect more clearly with those around you.

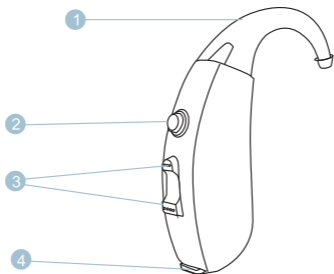
## **Scope**

This user manual is only intended to be used with the Advanced Affordable Hearing HC 206 hearing aid.

## **Precautions**

If you have an ear infection it is highly recommended that you do not wear a hearing aid until the infection has cleared up. Please consult with a hearing healthcare professional or your doctor prior to resuming use.

THE MANUFACTURER RESERVES THE RIGHT TO MODIFY THE TECHNICAL SPECIFICATIONS OF THIS PRODUCT WITHOUT ANY PRIOR NOTICE



1. Ear hook
2. Memory Switch
3. Rocker VC
4. Battery door

**NOTICE:** Please use closed dome to avoid whistling when you maximize the gain.

## Battery

The HC 206 uses a 13A Battery.

When placing the battery in your HC 206, put the battery with the positive (+) side (or totally flat side) up and insert it into the battery door. If the battery is inserted incorrectly, the door will not close. Do not force the door closed.

**CAUTION:** Batteries are dangerous if swallowed! Keep batteries away from children and pets. Never put batteries in your mouth for any reason they are easily swallowed. In case a battery has been swallowed, seek immediate medical attention.

**TOTURN ON-** Gently open the battery door, insert battery and close the door. Then the instrument would be equipped with a power on delay, you will be given several seconds to seat the device comfortably before it turns on.

**TOTURN OFF-**Simply open the battery door completely. Store it in a safe & dry place.

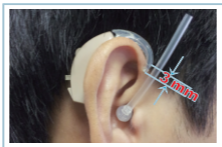
## How to deal with the earhook

### Attach your hearing instrument parts

1. Choose the suitable earmold (or eartip), and then connect the adaptor and sound tube.



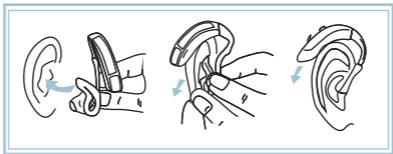
2. Cut off the unneeded part of sound tube as shown to achieve a comfortable length. Connect the sound tube to the earhook.



### Put on your hearing instrument

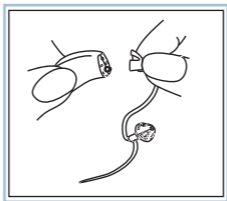
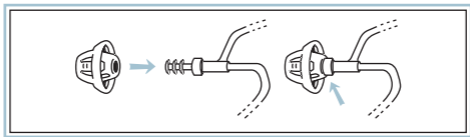
**Step 1:** Hold the earmold (or eartip) by the outer side near the tubing. Insert the canal tip of the earmold into your ear canal gently. Then softly press the earmold into place.

**Step 2:** Carefully place the BTE behind your ear with the ear hook and sound tube wrapped over the top.



## Assembling the HC-206

1. Select the Ear Tube with the red 2B marking if you prefer to wear the HC-206 on your right ear. Select the Ear Tube with the blue 2B marking if you prefer to wear the HC-206 on your left ear.
2. Choose the dome that fits you best and connect it to the Ear Tube by pushing the dome over the grooves on the tube until it is secure.
3. Align the Ear Tube over the adapter that sticks out of the HC-206 casing. Twist the tube onto the adapter in a clockwise direction until it fits snugly against the HC-206 casing.



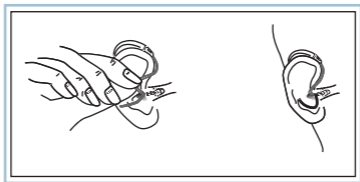


## Wearing your hearing aid

**Step 1.** Gently insert the sound tube into your ear canal to the most comfortable place.

**Step 2.** Position the retention lock into the indentation above your ear lobe using your index finger.

**Step 3.** Place the hearing aid over the top of your ear.



**NOTE:** Never insert the tube into the ear canal without a dome attached.

## Replacing the battery

1. Switch off the hearing instrument.
2. Open the battery door and remove the old battery.
3. Remove the protective foil from the new battery.
4. Insert the new battery sure with the plus (+) up.
5. Close the battery door.

**Important:** Handle the battery door gently. The operation requires only a minimum of force. If there is any resistance when closing the battery door, ensure that the battery is correctly inserted. The door can not be closed if the battery is reversed.



## Volume control

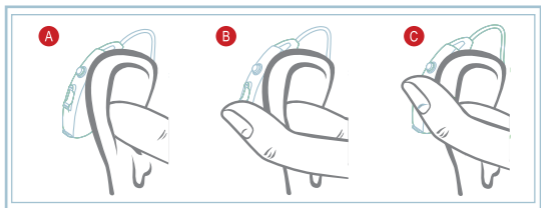
The rockerVC serves as the volume control. The volume control operates as described below:

Place thumb into the helix portion of your ear for all adjustments.

Next, take your index finger and place it on the rocker switch.

Briefly push/release the top half of the switch to increase the volume, and the bottom half of switch to decrease the volume .

Each short press changes the volume slightly.



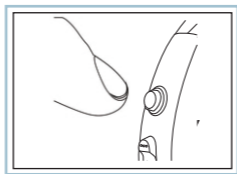
## Memory switch

When the hearing instrument is turned on, it will automatically be in program 1.

The additional settings which are pre-programmed for your specific needs are accessed by the memory switch. Each time you press the memory switch, the hearing instrument will move to the next program. The sequence is 1, 2, 1...

Your hearing instrument will alert to identify which program you are using. When you select program 1 you will hear one beep, program 2 will emit two beeps.

Please note that the programs are pre-set by your hearing healthcare professional or manufacturer.



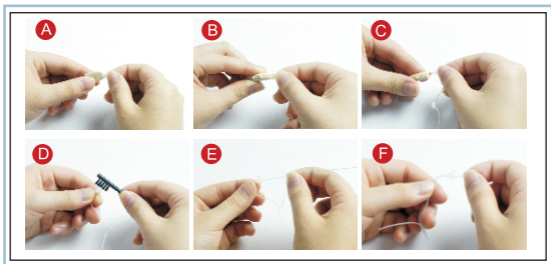
**Notice:** Your HC 206 has function of volume and program resume. The instrument reverts to the previous setting of volume and program when powered on again.

## Cleaning

Keep the hearing aid clean and dry, use soft cloth or cotton paper to clean the oil and moisture on the shell of hearing aids. If hearing aid is often in a moist environment or always touch sweat, please put the hearing aids and ear mold into dry case when you do not wear it at night.

Use a soft cloth to wipe after use to remove any particles or moisture. The Cleaning Tool is used to remove debris / wax from the sound tubing and earmold.

1. To remove tubes gently rotate the sound tubing holding the instrument firmly.
2. Pull sound tubing from the hearing instrument.
3. To clean, insert the cleaning tool through the nose cone end. Thread all the way through the tubing & earbud.
4. To reassemble or change sound tubing simply line up and push tubing until it snaps into place.

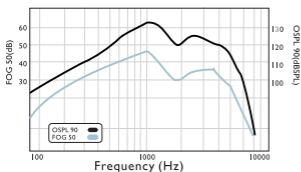


## Troubleshooting

| <b>SYMPTOM</b>               | <b>POSSIBLE CAUSES</b>                      | <b>SOLUTIONS</b>   |
|------------------------------|---|--|
| No sound                     | No battery                                  | Insert the battery   |
|                              | Dead or low battery                         | Replace battery  |
|                              | Battery improperly inserted                 | Insert battery correctly   |
|                              | Wax or debris in the microphone or receiver | Clean both microphone and receiver with brush. Remove and clean the dome |
| Not loud enough              | Low battery                                 | Replace battery  |
|                              | Excessive ear wax                           | Consult your physician   |
|                              | Volume set too low                          | Turn the trimmer clockwise   |
|                              | Wax or debris in the microphone or receive  | Clean both microphone and receiver with brush. Remove and clean the dome |
|                              | Hearing change                              | Contact your hearing care professional                                   |
| Whistling, feedback          | Loose insertion of hearing instrument       | Remove and reinsert  |
|                              | Excessive ear wax                           | Consult your physician   |
|                              | Dome of improper size                       | Change domes of proper size  |
| Not clear or distorted sound | Low battery                                 | Replace battery  |
|                              | Hearing instrument damaged                  | Contact <a href="http://Advancedhearing.com">Advancedhearing.com</a>     |
|                              | Hearing instrument settings not optimal     | Contact <a href="http://Advancedhearing.com">Advancedhearing.com</a>     |

## Technical information

### Testing diagram



## Technical Data

| Technical Data           | HC 206   |
|--------------------------|----------|
| Peak OSPL 90(dB SPL)     | 132      |
| HFA OSPL 90(dB SPL)      | 126      |
| Peak Gain(dB)            | 45       |
| Reference Test Gain (dB) | 35       |
| HFA full on Gain(dB)     | 38       |
| Total Harmonic Distort:  |          |
| 500Hz(%)                 | 3.0      |
| 800Hz(%)                 | 3.0      |
| 1600Hz(%)                | 3.0      |
| EQ Input Noise(dB)       | 30       |
| Battery Current(mA)      | 1.0      |
| Frequency Range          | 200-5500 |

ANSI S3.22-2003

## **Special Statements**

> Hearing aids will not restore normal hearing and will not prevent or improve a hearing impairment resulting from organic conditions.

> Allergic reactions to hearing aids are unlikely. However, if you experience itching, redness, soreness, inflammation or a burning sensation in or around your ears, inform your hearing health care professional and contact your physician.

> The use of hearing aids is only part of hearing rehabilitation; auditory training and lip reading instruction may be required as well.

> In most cases, infrequent use of hearing aids does not provide full benefit. Once you have become accustomed to your hearing aids, wear your hearing aids everyday all day.

> Hearing aids can be damaged by dropping them or getting them wet.

> If your hearing aid needs to be repaired, please call Toll Free **1-888-570-2740** to obtain a Repair Authorization number and instructions on where to send the hearing aid. You may send the hearing aid to Advanced Affordable Hearing, LLC c/o IMHear Corp, 2711B Curtiss St, Downers Grove, IL 60515, but if you do you will incur additional Service Charges.

## **FDA Information**

### **Warning to Hearing Aid Dispensers**

A hearing aid dispenser should advise a prospective hearing aid user to consult promptly with a licensed physician (preferably an ear specialist) before dispensing a hearing aid if the hearing aid dispenser determines through inquiry, actual observation, or review of any other available information concerning the prospective user, that the



prospective user has any of the following conditions: (i) Visible congenital or traumatic deformity of the ear. (ii) History of active drainage from the ear within the previous 90 days. (iii) History of sudden or rapidly progressive hearing loss within the previous 90 days. (iv) Acute or chronic dizziness. (v) Unilateral hearing loss of sudden or recent onset within the previous 90 days. (vi) Audiometric air-bone gap equal to or greater than 15 decibels at 500 hertz (Hz), 1,000 Hz, and 2,000 Hz. (vii) Visible evidence of significant cerumen accumulation or a foreign body in the ear canal. (viii) Pain or discomfort in the ear.

Important notice for prospective hearing aid users Good health practice requires that a person with a hearing loss have a medical evaluation by a licensed physician (preferably a physician who specializes in diseases of the ear) before purchasing a hearing aid. Licensed physicians who specialize in diseases of the ear are often referred to as otolaryngologists, otologists or otorhinolaryngologists. The purpose of medical evaluation is to assure that all medically treatable conditions that may affect hearing are identified and treated before the hearing aid is purchased.

Following the medical evaluation, the physician will give you a written statement that states that your hearing loss has been medically evaluated and that you may be considered a candidate for a hearing aid. The physician will refer you to an audiologist or a hearing aid dispenser, as appropriate, for a hearing aid evaluation. The audiologist or hearing aid dispenser will conduct a hearing aid evaluation to assess your ability to hear with and without a hearing aid. The hearing aid evaluation will enable the audiologist or dispenser to select and fit a hearing aid to your individual needs.

If you have reservations about your ability to adapt to amplification, you should inquire about the availability of a trial-rental or purchase-option program. Many hearing aid dispensers now offer programs that permit you to wear a hearing aid for a period of time for a nominal fee after which you may decide if you want to purchase the hearing aid. Federal law restricts the sale of hearing aids to those individuals who have obtained a medical evaluation from a licensed physician. Federal law permits a fully informed adult to sign a waiver statement declining the medical evaluation for religious or personal beliefs that preclude consultation with a physician. The exercise of such a waiver is not in your best health interest and its use is strongly discouraged.

### **Children with hearing loss**

In addition to seeing a physician for a medical evaluation, a child with a hearing loss should be directed to an audiologist for evaluation and rehabilitation since hearing loss may cause problems in language development and the educational and social growth of a child. An audiologist who is qualified by training and experience to assist in the evaluation and rehabilitation of a child with hearing loss is recommended.





**Advanced**  
**Affordable Hearing**

**FDA** **CE**<sub>0482</sub> **MED**/**CE****RT**

---

Advanced Affordable Hearing, LLC.

Tel: 1-888-570-2740

Fax: 1-877-308-1820

Website: [www.advancedhearing.com](http://www.advancedhearing.com)

Email: [support@advancedaffordablehearing.com](mailto:support@advancedaffordablehearing.com)