



User Manual

Contents

| | |
|---|----|
| Preface | 2 |
| Features | 3 |
| Operation | 4 |
| How to Wear Your Hearing Instrument | 4 |
| ON And OFF Function | 5 |
| Trimmer | 6 |
| Replacing the battery | 7 |
| Memory Switch | 8 |
| Maintenance | 9 |
| Battery Caring | 9 |
| Troubleshooting Guide | 10 |
| Appendix | 11 |
| Working Condition | 11 |
| FDA information | 12 |

Preface

Congratulations on becoming the new owner of our flagship hearing aid, the TACTEar 80I! We think you will find the perfect mix of price and quality.

Please take the time to carefully read through this manual so you can become knowledgeable in how to use the hearing aid as well as its various functions!

Welcome to the Advanced Affordable Hearing family!

Intended use

Hearing aids help people with diminished hearing by amplifying the sounds around them and feeding it directly into the ear. The amplification helps to compensate for hearing loss allowing you to connect more clearly with those around you.

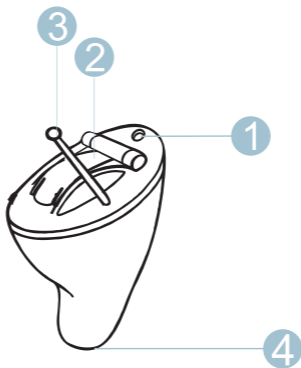
Scope

This user manual is only intended to be used with the Advanced Affordable Hearing TACTEar 80I hearing aid.

Precautions

If you have an ear infection it is highly recommended that you do not wear a hearing aid until the infection has cleared up. Please consult with a hearing healthcare professional or your doctor prior to resuming use.

THE MANUFACTURER RESERVES THE RIGHT TO MODIFY THE TECHNICAL SPECIFICATIONS OF THIS PRODUCT WITHOUT ANY PRIOR NOTICE



1. Microphone inlet
2. Battery door
3. Removal handle
4. Sound outlet

Preparation

How to Wear Your Hearing Instrument

Hearing instrument is color-coded , red for the right ear and blue for the left ear. The color is indicated either on the shell or on a label on the hearing instrument.

Attach the dome

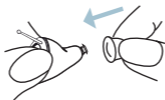
The Dome is an earpiece used to secure the TACTEar comfortably in you ear canal and to protect the sound outlet from earwax intrusion.

Your hearing healthcare professional should have set the right dome for you.

Push the dome over the grooves on the tube to mount it.

To insert TACTEar 801:

1. Hold the hearing instrument with the removable handle at the bottom and the white dot at the top between your thumb and forefinger.



2. Gently insert the canal portion of the hearing instrument into your ear by pushing back and tucking the hearing instrument completely into the right place with your forefinger.



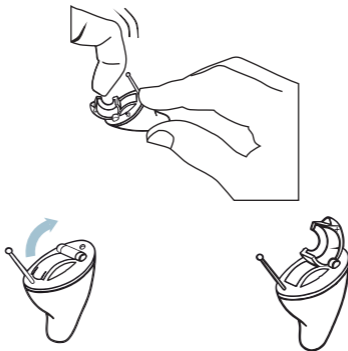
NOTE:

Before placing the TACTEar 80I into your ear, ensure that the battery is inserted properly and the battery door is closed securely.

ON And OFF Function

Turn on your hearing instrument by closing the battery door completely.

Turn off your hearing instrument by opening the battery door slightly.

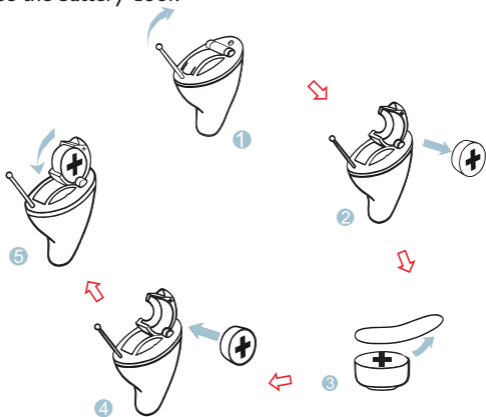


NOTE:

Never force the battery door open or closed.

Replacing the battery

1. Switch off the hearing instrument by opening the battery door.
2. Remove the old battery.
3. Remove the protective foil from the new battery.
4. Insert a new battery, ensure that the plus (+) sign on the battery is facing upwards as shown below.
5. Close the battery door.



Important: Handle the battery door gently. The operation requires only a minimum of force. If there is any resistance when closing the battery door, ensure that the battery is correctly inserted. The door will not close if the battery is upside down.

Memory Switch

When the hearing instrument is turned on, it will automatically be in program 1.

The additional settings that are preprogrammed for your specific needs are accessed by the memory switch. Each time you push the memory switch, you move to the next program. The sequence is 1, 2, 3, 1...

Your hearing instrument will alert you to help you identify which program you are using. When you select program 1 you will hear one beep, program 2 will emit two beeps, and so on.

TAP

TACTEar 80I with Acoustic Push Button which helps you select programs with a slight touch. Simply tap your ear, the hearing aid switches smoothly to adapt to your current listening situation.



Tap to switch memory

Please kindly note that the programs are set by your hearing healthcare professional or manufacturer.

Maintenance

The performance of hearing instrument greatly depends on the quality of the battery using.

- 1) It is important to use high-quality batteries. With reliable high-quality batteries, you can avoid periodic hearing instrument failures.
- 2) It is also important that the batteries are well packed before use. Each battery is therefore provided with an adhesive label which ensures the battery is sealed and fresh till use.
- 3) Never leave an exhausted battery in the hearing instrument. Exhausted battery may leak and it would damage the instrument.

Cleaning

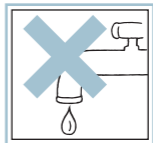
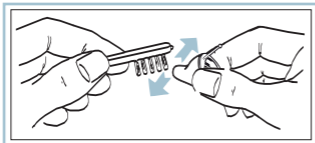
Ear wax is one of the main causes of problems with hearing instrument. Filter and other devices are used for preventing wax from entering the instrument.

Use the wax protection system and tools to clean any accumulated wax each day. Replace the wax filter regularly.

Cleaning is easier when ear wax is dry in the morning before you insert the instrument to your ear.

• Cleaning the instrument

Clean your instrument with a soft, dry cloth and a small brush. Do the cleaning on a soft table to avoid damage or scratch in case the instrument falls.



Do not use water or other fluids.

Troubleshooting

NO SOUND

| | |
|---|---|
| Battery may be low or dead | Replace battery |
| Hearing instrument may not be turned on | Turn on the hearing instrument |
| Sound outlet may be blocked | Clear sound outlet or contact hearing healthcare professional |
| Volume may be too low | Adjust VC trimmer |
| Start up delay is on | Wait a few seconds for device to turn on |

INTERMITTENT SOUND

| | |
|-----------------------------------|---|
| Battery may be low or dead | Replace battery |
| WaxStop may be blocked | Exchange WaxStop or contact hearing healthcare professional |
| There may be poor battery contact | Contact hearing healthcare professional |

TOO MUCH BASS

| | |
|----------------------------|-----------------|
| Battery may be low or dead | Replace battery |
|----------------------------|-----------------|

LOW VOLUME

| | |
|--------------------------------|---|
| Battery may be low | Replace battery |
| Hearing instrument may loose | Remove and reinsert our instrument |
| You may have excessive cerumen | Contact hearing healthcare professional |
| Volume may be turned down | Adjust VC trimmer |

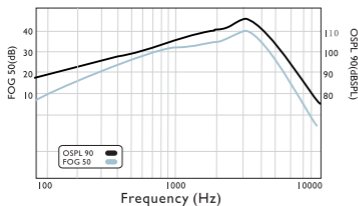
WHISTLING, FEEDBACK

| | |
|-----------------------------------|---|
| You may have excessive cerumen | Clean vent or contact hearing healthcare professional |
| Hearing instrument may loosen | Remove and reinsert your instrument |
| There may be poor battery contact | Contact hearing healthcare professional |

Appendix

Technical information

Testing diagram



Technical Data

| Technical Data | TACTEar 801 |
|--------------------------|-------------|
| Peak OSPL 90(dB SPL) | 115 |
| HFA OSPL 90(dB SPL) | 110 |
| Peak Gain(dB) | 40 |
| Reference Test Gain (dB) | 35 |
| HFA full on Gain(dB) | 30 |
| Total Harmonic Distort: | |
| 500Hz(%) | 2.0 |
| 800Hz(%) | 1.0 |
| 1600Hz(%) | 1.0 |
| EQ Input Noise(dB) | 28 |
| Battery Current(mA) | 1.0 |
| Frequency Range | 200-5500 |

ANSI S3.22-2003

Special Statements

> Hearing aids will not restore normal hearing and will not prevent or improve a hearing impairment resulting from organic conditions.

> Allergic reactions to hearing aids are unlikely. However, if you experience itching, redness, soreness, inflammation or a burning sensation in or around your ears, inform your hearing health care professional and contact your physician.

> The use of hearing aids is only part of hearing rehabilitation; auditory training and lip reading instruction may be required as well.

> In most cases, infrequent use of hearing aids does not provide full benefit. Once you have become accustomed to your hearing aids, wear your hearing aids everyday all day.

> Hearing aids can be damaged by dropping them or getting them wet.

> If your hearing aid needs to be repaired, please call Toll Free **1-888-570-2740** to obtain a Repair Authorization number and instructions on where to send the hearing aid. You may send the hearing aid to Advanced Affordable Hearing, LLC c/o IMHear Corp, 2711B Curtiss St, Downers Grove, IL 60515, but if you do you will incur additional Service Charges.

FDA Information

Warning to Hearing Aid Dispensers

A hearing aid dispenser should advise a prospective hearing aid user to consult promptly with a licensed physician (preferably an ear specialist) before dispensing a hearing aid if the hearing aid dispenser determines through inquiry, actual observation, or review of any other available information concerning the prospective user, that the

prospective user has any of the following conditions: (i) Visible congenital or traumatic deformity of the ear. (ii) History of active drainage from the ear within the previous 90 days. (iii) History of sudden or rapidly progressive hearing loss within the previous 90 days. (iv) Acute or chronic dizziness. (v) Unilateral hearing loss of sudden or recent onset within the previous 90 days. (vi) Audiometric air-bone gap equal to or greater than 15 decibels at 500 hertz (Hz), 1,000 Hz, and 2,000 Hz. (vii) Visible evidence of significant cerumen accumulation or a foreign body in the ear canal. (viii) Pain or discomfort in the ear.

Important notice for prospective hearing aid users Good health practice requires that a person with a hearing loss have a medical evaluation by a licensed physician (preferably a physician who specializes in diseases of the ear) before purchasing a hearing aid. Licensed physicians who specialize in diseases of the ear are often referred to as otolaryngologists, otologists or otorhinolaryngologists. The purpose of medical evaluation is to assure that all medically treatable conditions that may affect hearing are identified and treated before the hearing aid is purchased.

Following the medical evaluation, the physician will give you a written statement that states that your hearing loss has been medically evaluated and that you may be considered a candidate for a hearing aid. The physician will refer you to an audiologist or a hearing aid dispenser, as appropriate, for a hearing aid evaluation. The audiologist or hearing aid dispenser will conduct a hearing aid evaluation to assess your ability to hear with and without a hearing aid. The hearing aid evaluation will enable the audiologist or dispenser to select and fit a hearing aid to your individual needs.

If you have reservations about your ability to adapt to amplification, you should inquire about the availability of a trial-rental or purchase-option program. Many hearing aid dispensers now offer programs that permit you to wear a hearing aid for a period of time for a nominal fee after which you may decide if you want to purchase the hearing aid. Federal law restricts the sale of hearing aids to those individuals who have obtained a medical evaluation from a licensed physician. Federal law permits a fully informed adult to sign a waiver statement declining the medical evaluation for religious or personal beliefs that preclude consultation with a physician. The exercise of such a waiver is not in your best health interest and its use is strongly discouraged.

Children with hearing loss

In addition to seeing a physician for a medical evaluation, a child with a hearing loss should be directed to an audiologist for evaluation and rehabilitation since hearing loss may cause problems in language development and the educational and social growth of a child. An audiologist who is qualified by training and experience to assist in the evaluation and rehabilitation of a child with hearing loss is recommended.



Advanced
Affordable Hearing

FDA **CE**₀₄₈₂ **MED**/**CE****RT**

Advanced Affordable Hearing, LLC.

Tel: 1-888-570-2740

Fax: 1-877-308-1820

Website: www.advancedhearing.com

Email: support@advancedaffordablehearing.com